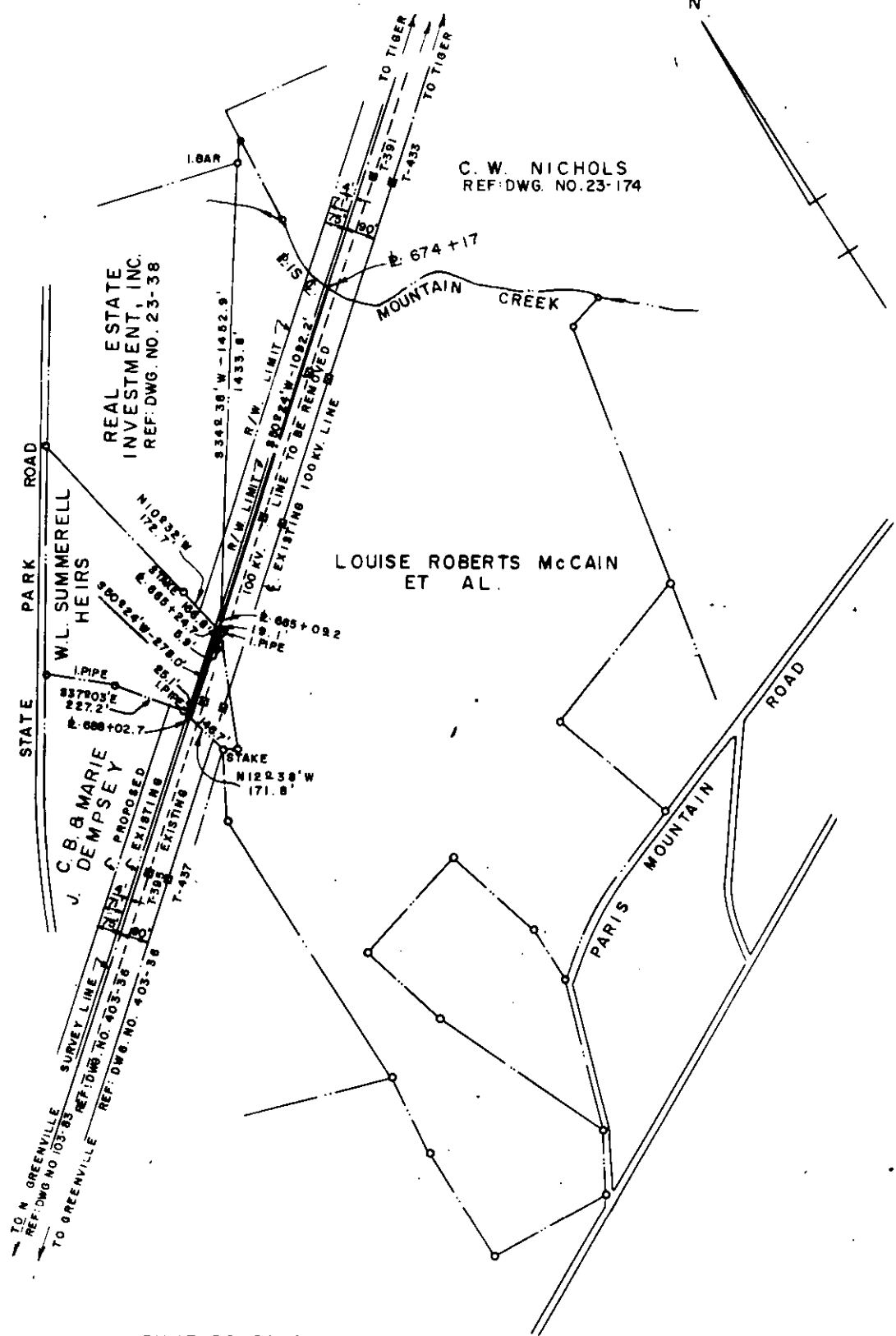


N



REAL ESTATE INVESTMENT, INC.  
REF. DWG. NO. 23-38

C. W. NICHOLS  
REF. DWG. NO. 23-174

LOUISE ROBERTS MCCAIN ET AL.

W. L. SUMMERELL HEIRS

C. B. & MARIE J. DEMPSEY

DUKE POWER COMPANY  
TIGER - NORTH GREENVILLE  
TRANSMISSION LINE  
CROSSING PROPERTY OF  
LOUISE ROBERTS MCCAIN ET AL.  
AND W. L. SUMMERELL HEIRS  
CHICK SPRINGS TOWNSHIP  
GREENVILLE COUNTY, S. C.

Recorded February 6, 1964 At 12:22 P.M. # 22194

SCALE: 1" = 400'  
BOOK NO. 659

JULY 23, 1963  
FILE NO. 23-140